



Sanjay Gandhi
Biological Park
Government of Bihar

SPARROW SURVEY 2025

पटना जू

के द्वारा आयोजित गौरैया सर्वे एवं जन-
जागरुकता अभियान 2025



Latitude: 25°35'52"N

Longitude: 85°6'8"E

Elevation: 60.69 ± 3 m

Accuracy: 3.8 m

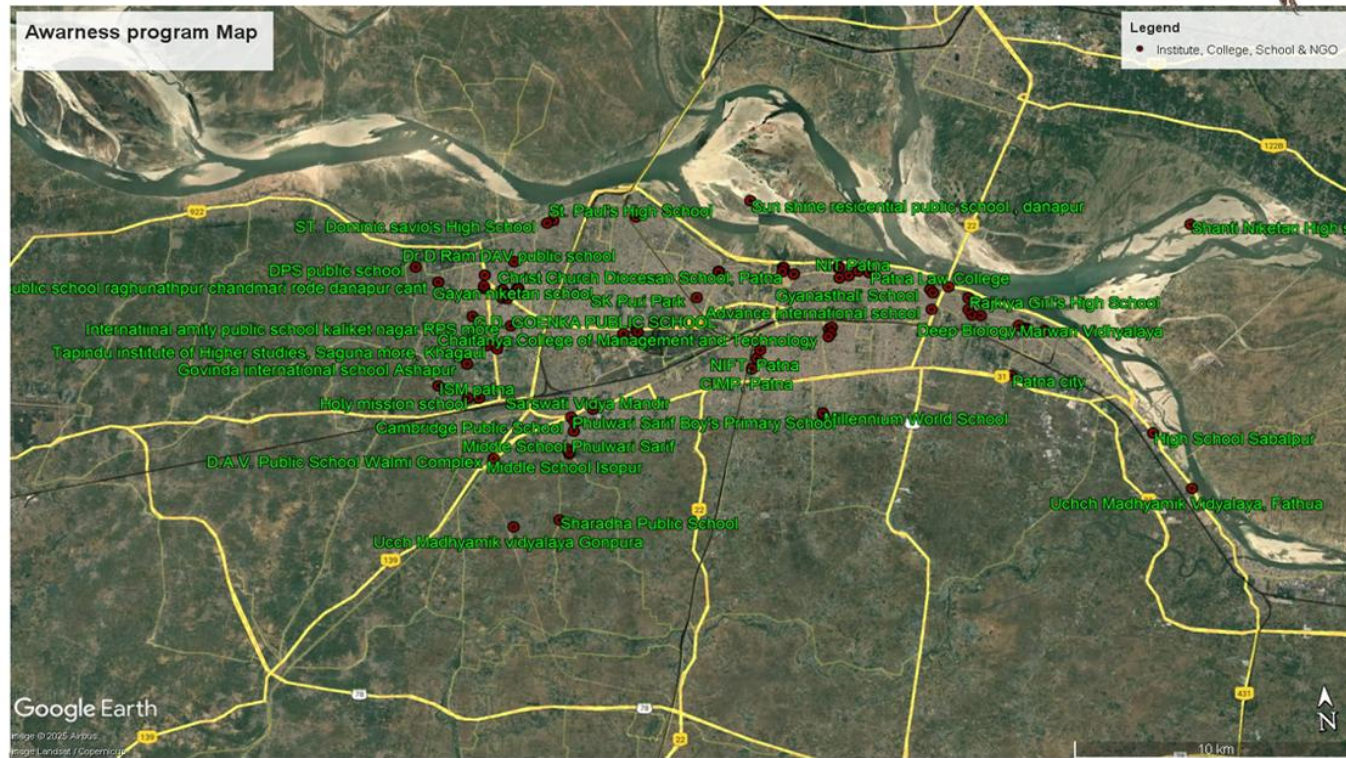
Time: 16-04-2025 11:10

NEST & BOWL INSTALLATION SITES





गौरैया जन-जागरूकता अभियान के तहत भेंट किये गये स्कूलों, कॉलेज एवं संस्थानों का मानचित्र



PEOPLE INTERACTION





पटना जू के द्वारा आयोजित गौरैया सर्वे एवं जन- जागरूकता अभियान 2025

- विश्व गौरैया दिवस-2025 के उपरांत पटना जू के द्वारा गौरैया-मित्रों की सहायता से गौरैया सर्वे एवं जन-जागरूकता अभियान चलाया गया।
- गौरैया सर्वे एवं जन-जागरूकता अभियान 2 चरण में किया गया:-
- प्रथम चरण (दिनांक 16.04.2025 से 30.04.2025 तक)- जन-जागरूकता कार्यक्रम
- द्वितीय चरण (दिनांक 16.05.2025 से 31.05.2025 तक)- गौरैया सर्वे
- दिनांक 16.04.2025 से 30.04.2025 तक प्रथम चरण में पटना के 222 विभिन्न स्कूलों, कॉलेज एवं संस्थानों में गौरैया जागरूकता अभियान चलाया गया, जिसमें उन्हें घोंसला, पानी का घटोरा एवं गौरैया से संबंधित जानकारी पत्रिकाओं का वितरण किया गया।
- दिनांक 16.05.2025 से 31.05.2025 तक द्वितीय चरण में पटना में गौरैया का सर्वे xगौरैया के क्षेत्र में घोंसला एवं पानी का घटोरा की स्थापना की गई, जिसमें कुल 1010 गौरैया देखी गई।

NIT PATNA, WOMEN'S TRAINING COLLEGE & MAGADH MAHILA COLLEGE



MILLENNIUM WORLD SCHOOL, PATNA COLLEGE & PATNA LAW COLLEGE





**CHAITANYA COLLEGE OF MANAGEMENT & TECHNOLOGY, CHANDRAGUPT
INSTITUTE OF MANAGEMENT PATNA & HIGH SCHOOL, SABALPUR**



UCHCH MADHYAMIKA VIDYALAYA FATHUA, PATNA MUSLIM SCIENCE COLLEGE & BISHOP SCOTT SENIOR SECONDARY GIRLS SCHOOL



SHANTI NIKETAN GIRLS HIGH SCHOOL FATHUA, PATNA SCIENCE COLLEGE & VANIJAYA MAHAVIDYALAYA, PATNA





CHRIST CHURCH DIOCESAN SCHOOL, COLLEGE OF COMMERCE, ARTS AND SCIENCE & NIFT, PATNA



ARYABHATTA KNOWLEDGE UNIVERSITY PATNA, MAGADH MAHILA COLLEGE, DEPARTMENT OF COMMERCE & SHRI GURU GOBIND SINGH VIDYALAY, PATNA CITY



PATNA-CITY CENTRAL SCHOOL, BEGUMPUR, SUDARSHAN CENTRAL SCHOOL, PATNA CITY (JUNIOR BRANCH & SENIOR BRANCH), DEEP BIOLOGY CLASSES, SHRI MARVARI VIDYALAY, PATNA CITY (JUNIOR BRANCH & SENIOR BRANCH) & GURU GOBIND SINGH GIRLS SCHOOL (JUNIOR & SENIOR BRANCH)



Latitude: 25°34'52"N
Longitude: 85°13'22"E
Elevation: 116.42136 m
Accuracy: 7.8 m
Time: 04-18-2023 12:58



Latitude: 25°34'52"N
Longitude: 85°13'22"E
Elevation: 107.82122 m
Accuracy: 1.9 m
Time: 04-18-2023 13:10



Latitude: 25°36'7"N
Longitude: 85°12'49"E
Elevation: 68.2215 m
Accuracy: 5.7 m
Time: 04-18-2023 13:51



Latitude: 25°36'9"N
Longitude: 85°12'37"E
Elevation: 114.71929 m
Accuracy: 4.6 m



Latitude: 25°35'51"N
Longitude: 85°13'38"E
Elevation: 73.4841 m
Accuracy: 12.7 m
Time: 21-04-2023 09:13



Latitude: 25°35'46"N
Longitude: 85°12'43"E
Elevation: 8.47668 m
Accuracy: 6.6 m
Time: 21-04-2023 10:39



ADVANCE TUTORIAL CLASSES, ADVANCE INTERNATIONAL SCHOOL, B.K MATHEMATICS CLASSES, GYANASTHALI SCHOOL (SENIOR BRANCH & JUNIOR BRANCH), BAAL SUDHAAR GRIH & KD PUBLIC SCHOOL, PHULWARI SHARIF



NARAYANI KANYA HIGH SCHOOL, NARAYANI KANYA MIDDLE SCHOOL, I.T.I GOVERNMENT, GAIGHAT , RAJKIYA MAHILA MAHAVIDYALAY, GAIGHAT, SUNSHINE SCHOOL, DIGHA & GOVERNMENT POLYTECHNIC COLLEGE, GAIGHAT



ABALONE PUBLIC SCHOOL PHULWARI SHARIF, MIDDLE SCHOOL ISOPUR, MIDDLE SCHOOL (JUNIOR BRANCH), MIDDLE SCHOOL PHULWARISHARIF, D.A.V WALMI COMPLEX, PHULWARISHARIF & INDIAN PUBLIC SCHOOL, PATNA CITY



CAMBRIDGE PUBLIC SCHOOL, ST. PAUL HIGH SCHOOL DIGHA, SHARDA PUBLIC SCHOOL PHULWARI, SARASWATI VIDYA MANDIR, PHULWARISHARIF & PRATHMIK VIDYALAY PHULWARI THANA





GANDHI MADHYA VIDYALAYA, BALDEVA SCHOOL, ASHIANA - RAMNAGRI PHASE 1&2, CHANDMARI SURVEY & JANAKDHARI UCCH VIDYALAYA



GANDHI MADHYA VIDYALAYA, BALDEVA SCHOOL, ASHIANA – RAMNAGRI PHASE 1& 2, CHANDMARI SURVEY & JANAKDHARI UCCH VIDYALAYA

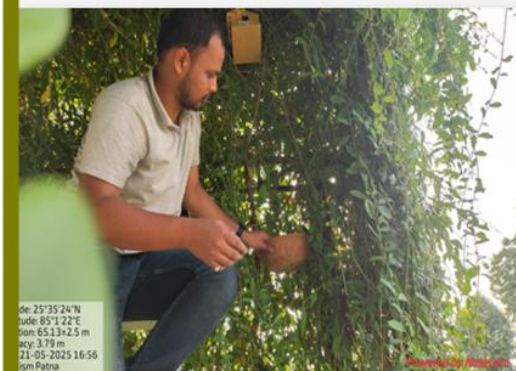




**DONY POLO PUBLIC SCHOOL, D.A.V PUBLIC SCHOOL,
RAJKIYE KANYA UCHH MADHYAMIK VIDYALAYA, PATMER SCHOOL &
ANAND VIHAR MANOKAMNA MANDIR PARK**



**CHRIST CHURCH DIOCESAN SCHOOL, INDIRAPURAM PUBLIC SCHOOL,
G.D GOENKA PUBLIC SCHOOL, ST. KARENS SECONDARY SCHOOL,
ISM PATNA COLLEGE & RAZA INTERNATIONAL GIRLS SCHOOL**

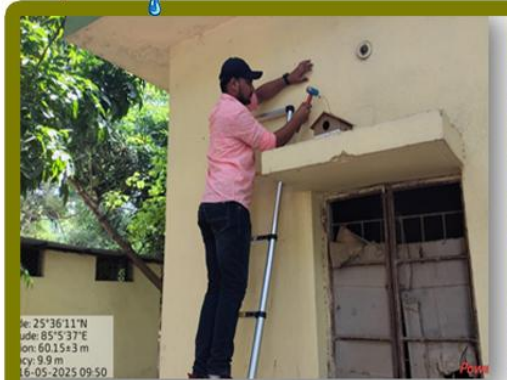


K.B SAHAY SCHOOL, MANER BARI DARGAH, GOVINDA INTERNATIONAL SCHOOL, TAPINDU INSITUTE OF HIGHER STUDIES





PM SHRI KENDRIYA VIDYALAYA NO.2 BAILEY ROAD, BIT, SUNSHINE RESIDENCY, DR. D RAM DAV & ST. DOMINIC PUBLIC SCHOOL



**BANKIPUR GOVERNMENT GIRLS SENIOR SECONDARY HIGH SCHOOL,
GOLGHAR, LODIPUR AREA, RAJDHANI VATIKA, BAZAR SAMITI,
VEER KUNWAR SINGH PARK & GOVT. POLYTECHNIC COLLEGE, PATNA CITY**



KAZIPUR COLONY, ROAD NO.2, THE INDIAN PUBLIC SCHOOL, PATNA & RAJKIYA GIRLS HIGH SCHOOL, GULZARBAGH

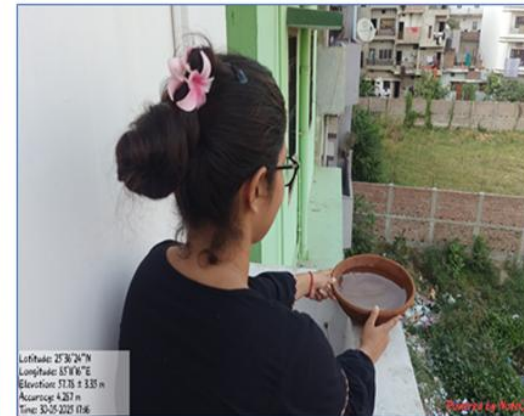


**SARASWATI VIDYA MANDIR, PHULWARI BLOCK, PRIMARY
SCHOOL PHULWARI, MIDDLE SCHOOL PHULWARI, MIDDLE SCHOOL ISOPUR,
KD PUBLIC SCHOOL, SHARDA PUBLIC SCHOOL, GONPURA PHULWAR,
SK PURI COLONY & MILLER HIGH SCHOOL, VEERCHAND**





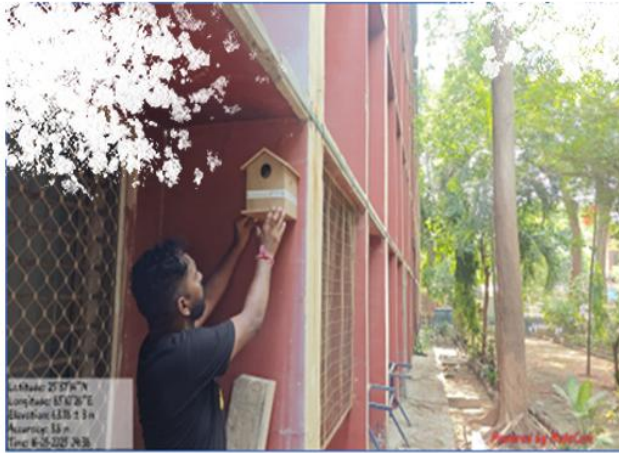
RAJENDRA NAGAR, ROAD NO.1, BABY PARK, RAJENDRA NAGAR, SHIVAM APARTMENT, RAJENDRA NAGAR, SHIVAJI PARK, KANKARBAGH & SANDALPUR, KUMHRAR



MAHAVIR PARK KANKARBAGH, C-SECTOR PARK, KANKARBAGH & ARYABHATTA KNOWLEDGE UNIVERSITY



NIT-PATNA, SACHIVALAYA COLONY PARK, VIDYAPURI COLONY PARK, K-SECTOR PARK, KANKARBAGH, MANJHI PARK, KANKARBAGH ,NIFT, PATNA



**CHRIST CHURCH DIOCESAN SCHOOL, INDIRAPURAM PUBLIC SCHOOL,
G.D GOENKA PUBLIC SCHOOL, ST. KARENS SECONDARY SCHOOL,
ISM PATNA COLLEGE & RAZA INTERNATIONAL GIRLS SCHOOL**



App Adoption & Downloads



500+

App Downloads

Android and iOS installations across Bihar



1514

Volunteer Submissions

Active participation from field coordinators
and bird enthusiasts



72

Nest Installations

New nesting sites established for munia bird
populations

Growth driven by community workshops, school partnerships, and local conservation group collaborations.

SPARROW POPULATION SURVEY REPORT



LEFT BANK - BAHADURPUR HOUSING COLONY, KANKARBAGH

- **Bahadurpur Housing Colony, Kankarbagh**



- Latitude: 25°35'20"N
- Longitude: 85°10'9"E
- SPOTTED: 15

- **Bahadurpur Housing Colony, Kankarbagh**



- Latitude: 25°35'20"N
- Longitude: 85°10'8"E
- SPOTTED: 9

- **Bahadurpur Housing Colony, Kankarbagh**



- Latitude: 25°35'19"N
- Longitude: 85°10'14"E
- SPOTTED: 20

- **Bahadurpur Housing Colony, Kankarbagh**



- Latitude: 25°35'19"N
- Longitude: 85°10'14"E
- SPOTTED: 15

- **Bahadurpur Housing Colony, Kankarbagh**



- Latitude: 25°35'13"N
- Longitude: 85°10'12"E
- SPOTTED: 5



- **RIGHT BANK - MIXED LOCATIONS**

- **Vijayanagar, Kankarbagh**



- Latitude: 25°35'11"N
- Longitude: 85°9'54"E
- SPOTTED: 13

- **Vijayanagar, Kankarbagh**

- Latitude: 25°35'14"N
- Longitude: 85°9'53"E
- SPOTTED: 17

- **VIVEK VIHAR, KANKARBAGH**



- Latitude: 25°35'11"N
- Longitude: 85°9'50"E
- SPOTTED: 16

- **RAJENDRA NAGAR, ROAD NO. 10**



- Latitude: 25°36'15"N
- Longitude: 85°9'42"E
- SPOTTED: 30

- VOCALISATION: 95

CONCLUSION

KANKARBAGH:

- A LARGE NO. OF SPARROWS WERE SPOTTED IN THIS AREA, ESPECIALLY HANUMAN NAGAR, SANJAY GANDHI NAGAR, DWARIKAPURI AND VIJAYA NAGAR.
- PEOPLE WERE ENTHUSIASTIC ABOUT NATURE AND BIRDS.
- NATURAL HABITATS WERE SPOTTED.

ASHOCHAK:

- THE RATIO OF MALE TO FEMALE SPARROWS OBSERVED WAS 2:1.
- NATURAL HABITAT WAS PRESENT.
- LOCALS REPORTED ACTIVE PRESENCE OF BIRD CATCHERS IN THE AREA, INCLUDING FEMALE SPARROWS IN THE NAME OF BAGEDI.

RAJENDRA NAGAR:

- HABITAT WAS ABUNDANT BUT FOOD SOURCE WERE SCARCE, BECAUSE OF WHICH SPARROWS WERE SPOTTED ONLY IN SPECIFIC AREAS.
- ROAD NO. 1, 2, 3, 4, 5, 8, 10 SHOWED PRESENCE OF SPARROWS.



thank you 

